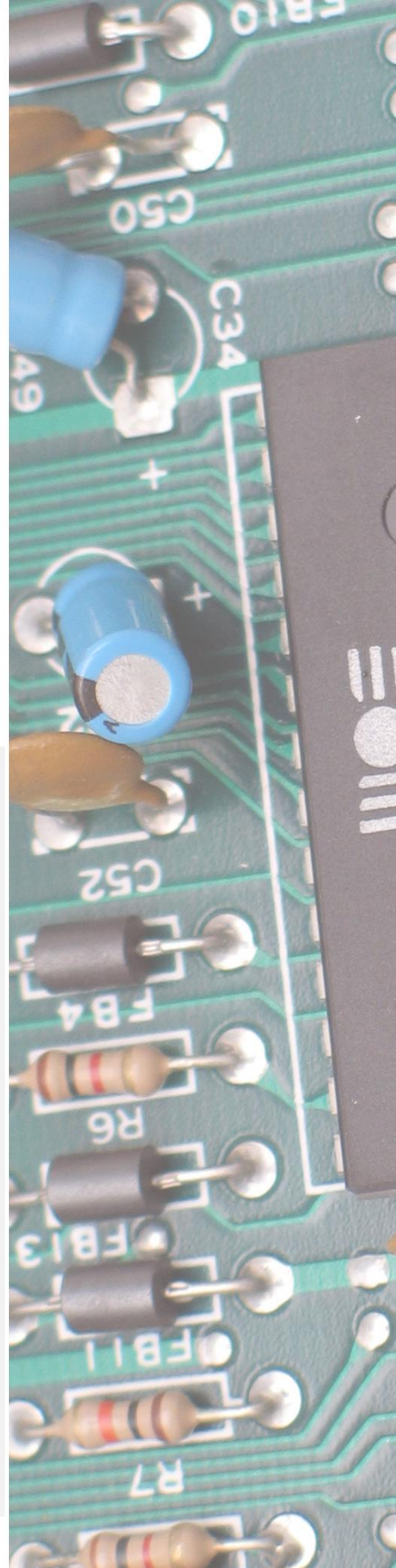


MODEL: ASEL-300 ASEL-450 OFFLINE SELECTIVE SOLDERING MACHINE

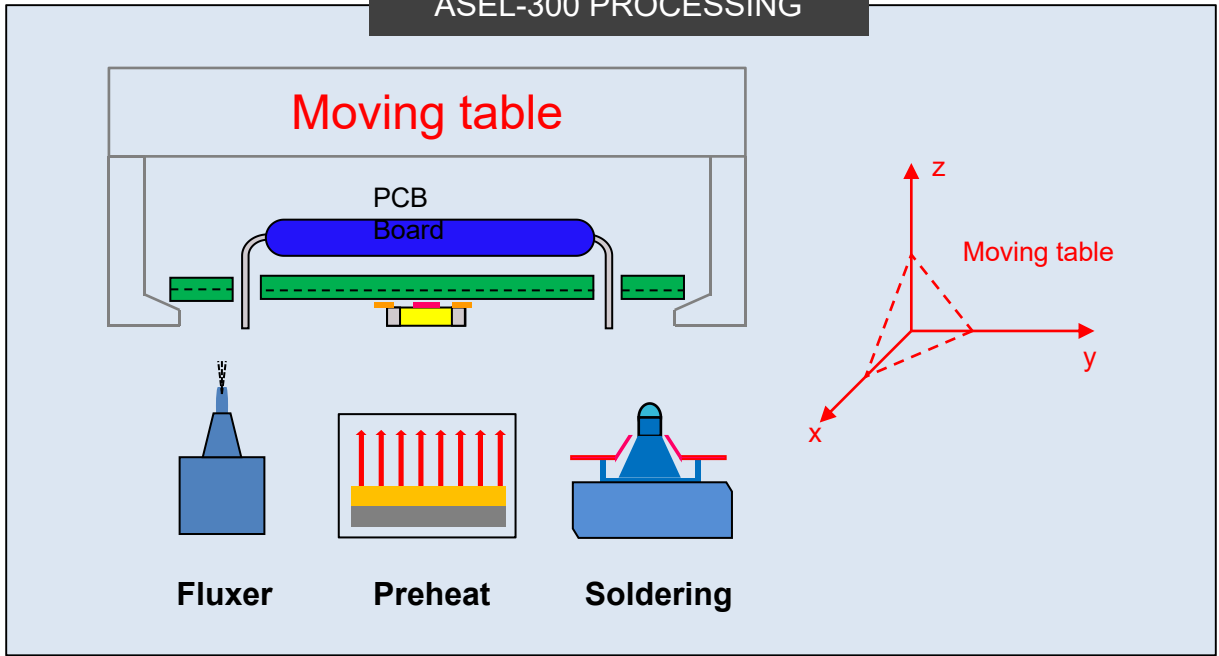


Descriptions:

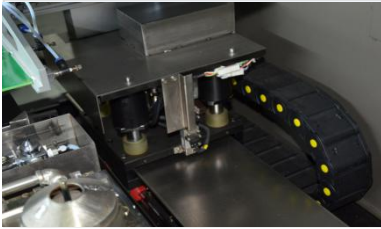
ASEL-300 & ASEL-450 is an compact offline selective soldering machine. Solder pot and flux sprayer is fixed, PCB is moved by x/y/z with servo motor, inline n2 heating system, Soldering path and fluxing path can be programming by PC, Live-on camera is optional to show the soldering process.

- ▶ English Windows based software programming.
- ▶ Draw line or dot in scanned board picture for path programming.
- ▶ Soldering moving speed, wave height, solder temperature etc are programmable for different components.
- ▶ Live on camera is optional to show soldering process at screen.
- ▶ X/Y/Z table was droved by Panasonic servo motor & servo driver.
- ▶ Standard equipped with "Ti" solder pot tank, best choice for lead free solder.
- ▶ Max PCB for 280x280 (11"x 11"), offline process in ASEL-300. MAX PCB for 330 x 430mm for ASEL-450. PCB is loaded by hand.
- ▶ Standard equipped with flux sprayer which can meet minim dia. 10mm dot at PCB. Optional for drop jet fluxer.
- ▶ Standard equipped with inline "n2" heating system, all "n2" come to solder pot will be heated.
- ▶ Different dia. soldering nozzle available, customized nozzle are available too.

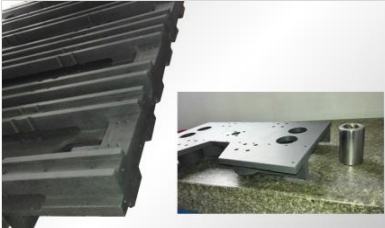
ASEL-300 PROCESSING



Motion System



Servo motor ,ball screw and linear rail for x,y ,z axis motion system,all motion system like ball screw, linear rail from best brand HIWIN in Taiwan.

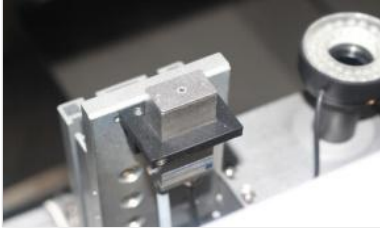


Cast aluminium for movement parts, providing a light & strong solution so to make sure machine can run at higher speed than competitors.

Spray Flux



Standard equipped with spray nozzle from Japan, which can meet minimum dia 10mm flux dot dimension. and Pressure flux tank with regulating valve to make sure flux is always under same pressure, so to provide stable fluxing performance.

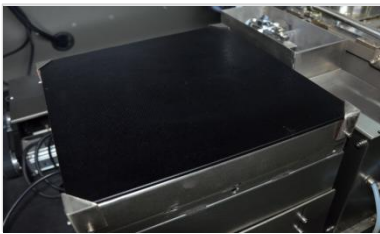


Optional with drop jet valve from Germany originally, which can meet dia 2mm flux dot dimension.



Pressure flux tank with regulating valve to make sure flux is always under same pressure, so to provide stable fluxing performance.

Preheat



Bottom preheating zone, before soldering PCB will move here to heat up setting time under setting temperature.

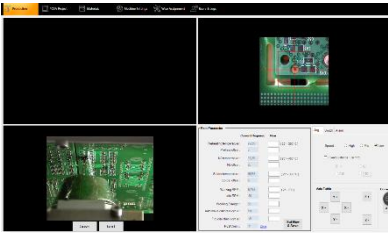
Soldering



Titanium soldering pot, 100% capable for lead free application. Standard equipped with mechanical pump, easy for maintenance.



N2 direct heating system is standard equipped, can heat N2 to 350 c degree, enhance the wetting ability for lead free soldering.



Optional with live camera can show soldering process in real time.

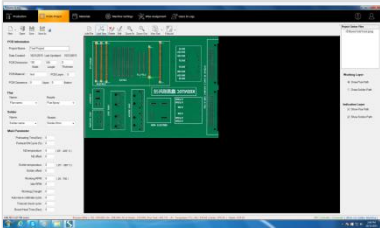


Can specially design solder nozzle for customer's application, refer below samples. And specially designed groove for nozzle, can get a high & stable solder head, especially usually for fine pitch soldering. With right application, it can handle 0.5mm clearance pad.

Controlling system

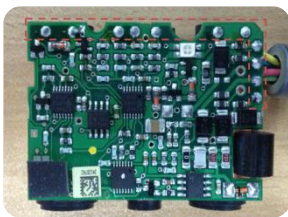


All brand electrical parts, such as Panasonic servo & driver, ABB box relay and contacts, Swiss Carlos SSR etc, all wiring certified by CE.



Customized software to edit, set, and operate, can programming with scanned picture as background, easy and friendly.

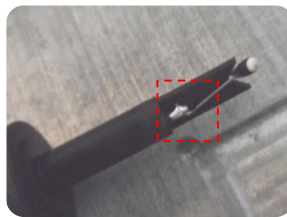
Applications:



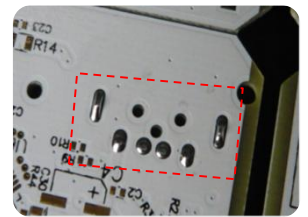
Wire Soldering



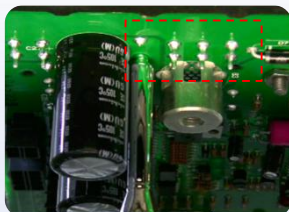
Mixed PCB



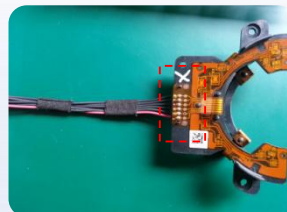
Automotive Sensor



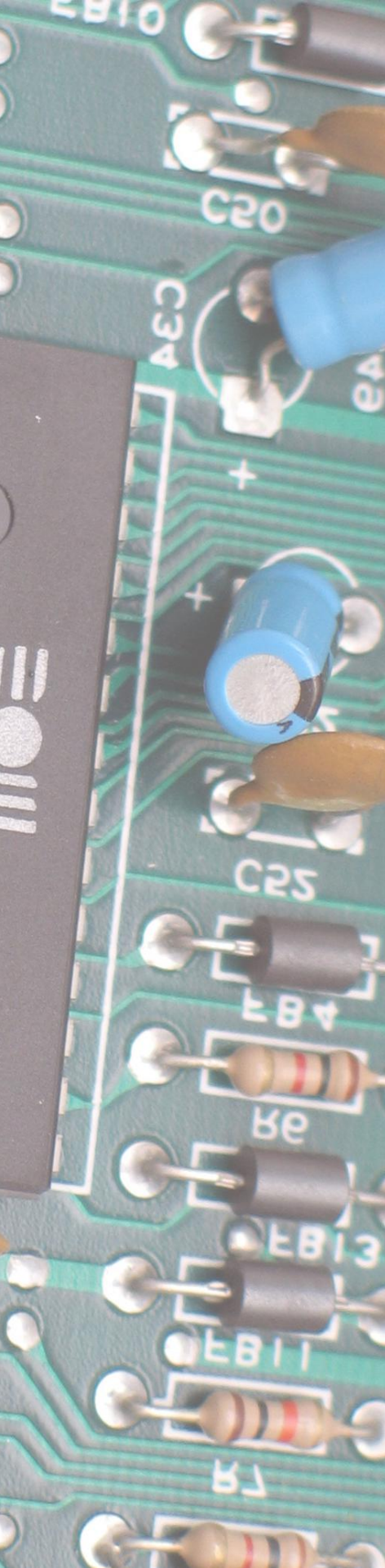
Mini SUB Connector



Mixed PCB, tall components beside soldering pad



Flex PCB to plastic cover



ASEL-300 Specifications

General

Operating power/Max power	2KW/5KW
PCB dimension	50x50---280x280mm
Machine dimension	910 (W) *1100 (D) *1275 (H)
Net weight	350KG
Power supply	1PH 220V 50HZ
Air supply	3-5 bars
Exhausting required	200M3/h

PCB Robotic Platform

Axes of Motion	X, Y, Z
Motion Control	Servo motors for X,Y,Z
Position Accuracy	+ / - 0.05mm

Solder Management

Standard Solder Stations	1
Solder Pot Capacity	15 kgs
Solder Temperature Control	PID
Heat-Up Time	20 Minutes
Max Temperature	380 C
Solder Pot heater	3kw

Solder Nozzles

Mini Wave Nozzles	Dia 2 to 8mm
Customized nozzle	Available
Nozzle Material	Proprietary Alloy

(N2) Inertion Management

N2 heater	Standard Equipped
N2 Temp PID Control Range	0 - 350 C
N2 Consumption per Nozzle	1.2m3/H
Required N2 Purity Oxygen	O2 < 20 PPM

Optional Flux Management

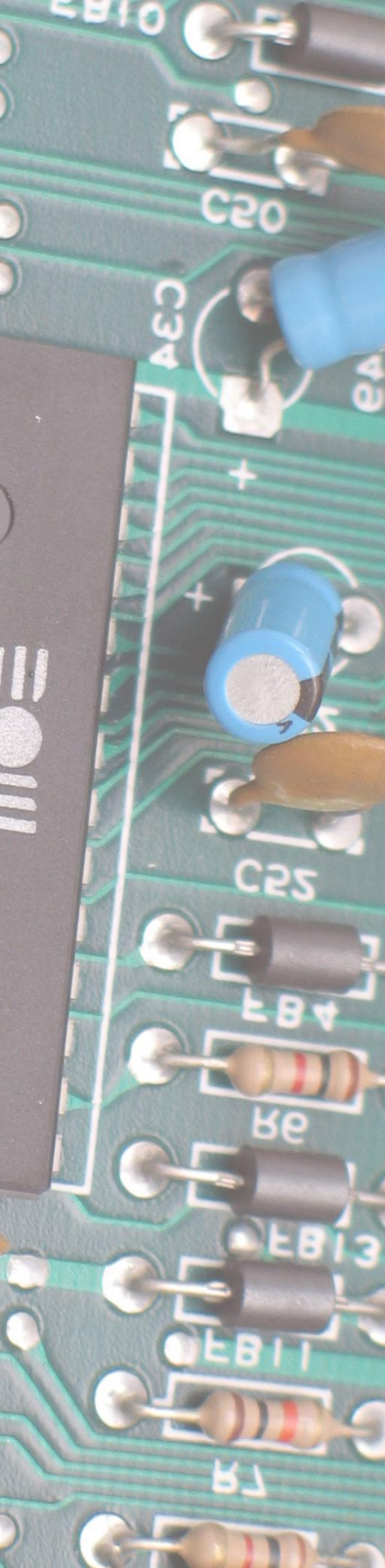
Spray Flux Nozzle	Standard equipped with sprayer nozzle with can meet dia 10mm dot at PCB
Spray Flux Durability	High Durability Stainless Steel
Flux Capacity	1L
Flux Tank	Constant pressure tank

Optional preheat

IR heater	2kw
-----------	-----

Controlling System

Industrial PC	Yes
Typical Program Time	10 Minutes
Program method	Setting by Displayer
Controlling system	Industrial PC



ASEL-450 Specifications

General

Operating power/Max power	2KW/5KW
PCB dimension	50x50---330x430mm
Machine dimension	1100 (W) *1150 (D) *1275 (H)
Net weight	400KG
Power supply	1PH 220V 50HZ
Air supply	3-5 bars
Exhausting required	200M3/h

PCB Robotic Platform

Axes of Motion	X, Y, Z
Motion Control	Servo motors for X,Y,Z
Position Accuracy	+ / - 0.05mm

Solder Management

Standard Solder Stations	1
Solder Pot Capacity	15 kgs
Solder Temperature Control	PID
Heat-Up Time	20 Minutes
Max Temperature	380 C
Solder Pot heater	3kw

Solder Nozzles

Mini Wave Nozzles	Dia 2 to 8mm
Customized nozzle	Available
Nozzle Material	Proprietary Alloy

(N2) Inertion Management

N2 heater	Standard Equipped
N2 Temp PID Control Range	0 - 350 C
N2 Consumption per Nozzle	1.2m3/H
Required N2 Purity Oxygen	O2 < 20 PPM

Optional Flux Management

Spray Flux Nozzle	Standard equipped with sprayer nozzle with can meet dia 10mm dot at PCB
Spray Flux Durability	High Durability Stainless Steel
Flux Capacity	1L
Flux Tank	Constant pressure tank

Optional preheat

IR heater	2kw
-----------	-----

Controlling System

Industrial PC	Yes
Typical Program Time	10 Minutes
Program method	Setting by Displayer
Controlling system	Industrial PC